

**Assembly & Safety Instructions for
Steel Socketed Goals
Code: 2759 Senior 24' x 8'
2763 Youth 21' x 7'**



Goals shown with nets and continental net supports which are available separately

**Conforms to
BS EN 748:2004 (senior)
BS 8462:2005 (youth)
when correctly assembled**

**Code of Practice BS8461:2005
includes, inspection,
maintenance/care and storage
of goalposts**

**All Edwards football goals are
independently tested by an
accredited testing house to
British and European
standards**

**Edwards is a suitable supplier
to the Football Foundation
Goalpost Safety Scheme**

Component check list

Packer's initials

- 2 x CROSSBARS (2759/CB) (2763/CB)
- 4 x UPRIGHTS (2759/U) (2763/U)
- 4 x SOCKETS (2781/1) (2781/1)
- 4 x NUTS (NUT-M10-ZP)
- 4 x BOLTS (BOL-M10-90-ZP)
- 40 x NET HOOKS (HK-02/A)

Despatched Received

Despatched	Received
<input type="checkbox"/>	<input type="checkbox"/>
<input type="checkbox"/>	<input type="checkbox"/>
<input type="checkbox"/>	<input type="checkbox"/>
<input type="checkbox"/>	<input type="checkbox"/>
<input type="checkbox"/>	<input type="checkbox"/>
<input type="checkbox"/>	<input type="checkbox"/>

Unwrap each component part carefully to avoid any possibility of damaging the paintwork

Please read carefully prior to assembly then store safely for future reference

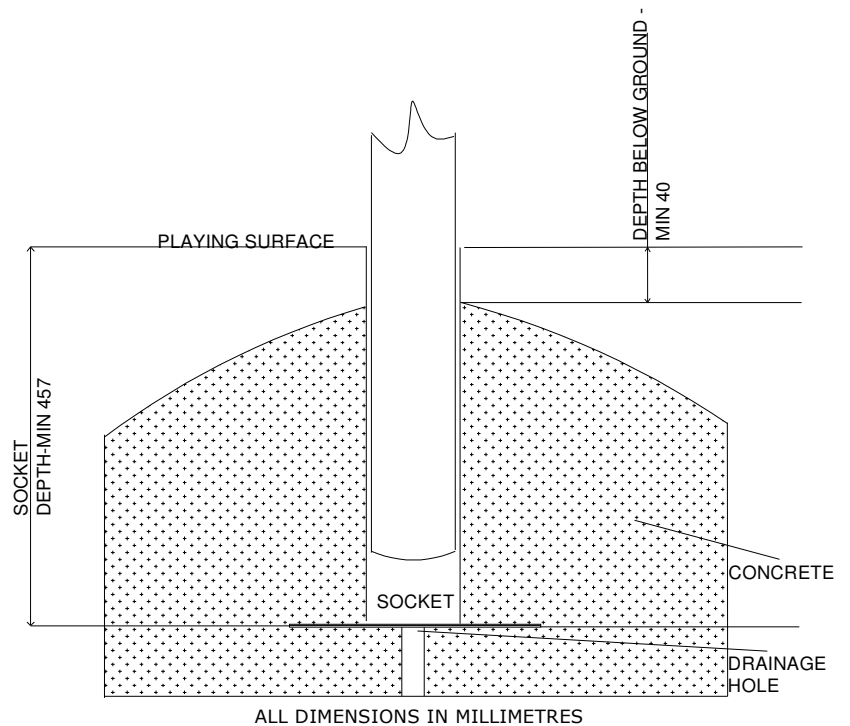
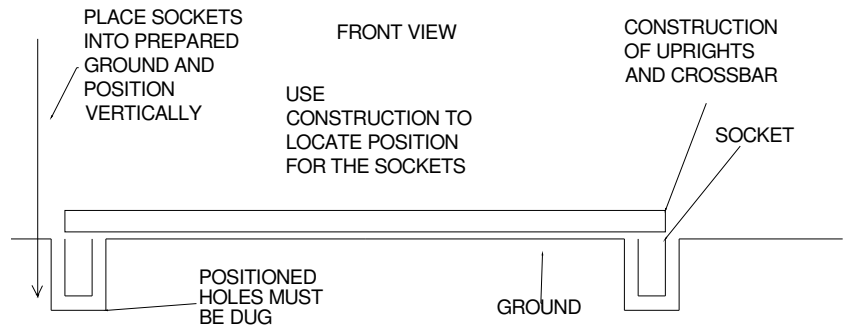
INSTALLATION INSTRUCTIONS FOR SOCKETED GOALS

- DRAWINGS NOT TO SCALE**

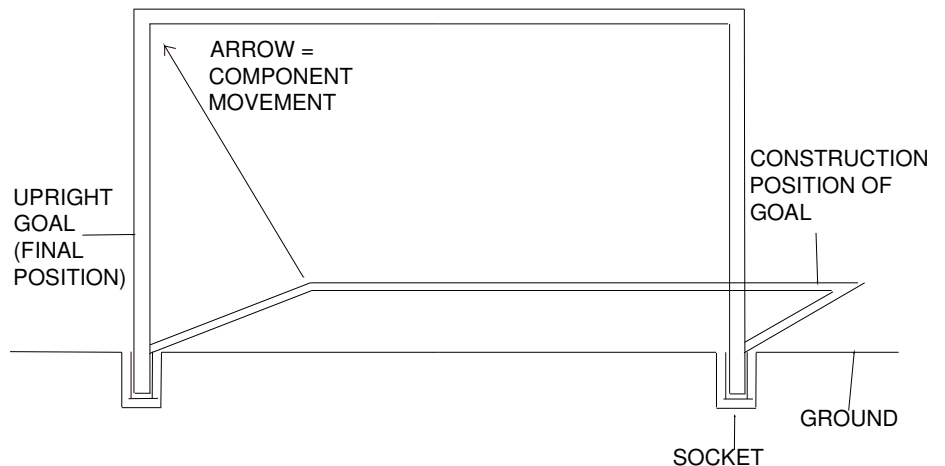
Sockets must be concreted into the ground and be allowed to set firmly before erecting the goals, however to obtain the exact correct location for placing the sockets it may be helpful to assemble the goal (see stage 1 below) before starting excavation:

Sockets should always be set into an amount of 'RC30' concrete, required to support forces exerted on the goal of 1800 N (vertical) and 1100 N (horizontally) for one minute. This is indicated by FA safety standards and is regardless of ground conditions.

- Excavate holes of appropriate shape and size
- Insert sockets
- Clamp into vertical position with top of socket level with ground surface
- Concrete into position
- Leave to set



Raise posts into position with care and slot into secured sockets in ground.



To obtain extra copies of socket installation instructions please visit our website:
www.edsports.co.uk/download_assembly.htm

ASSEMBLY INSTRUCTIONS FOR STEEL SOCKETED GOALS

FOR CODE NUMBERS:

2760 SENIOR 24' X 8'

2762 JUNIOR 21' X 7'

2759 SENIOR 24' X 8'

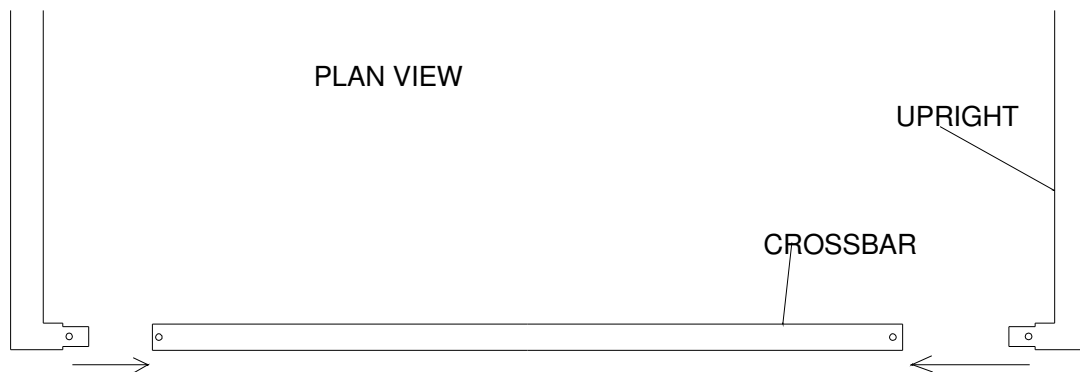
2763 JUNIOR 21' X 7'

2960 MINI SOCCER 12' X 6'

2962 7-A-SIDE 16' X 6'

• DRAWINGS NOT TO SCALE

- **Stage 1** Lay uprights and crossbar on ground and connect using nuts and bolts provided.
- Tighten all bolts ensuring no damage is caused to product paintwork.

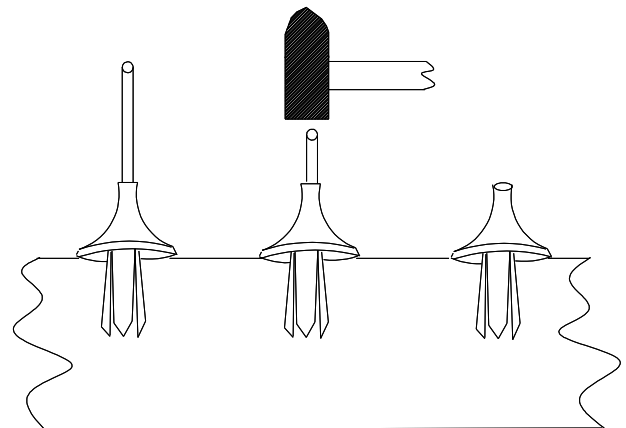


- **Stage 2** Before raising the posts, insert net clips into crossbar fit the split stem into the hole in the crossbar.

TAP the centre rod gently all the way home.

Ensure all hooks face the sideways position when assembling the crossbar.

Raise posts into position with care and slot into secured sockets in ground.



Edwards Sports Products Ltd
North Mills
BRIDPORT
Dorset DT6 3BE

Tel: 01308 424 111
Fax: 01308 455 800
E-mail: sales@edsports.co.uk
Web: www.edsports.co.uk



To obtain extra copies of assembly instructions please visit our website:
www.edsports.co.uk/download_assembly.htm